



(19) **United States**

(12) **Patent Application Publication**
Park et al.

(10) **Pub. No.: US 2004/0014251 A1**

(43) **Pub. Date: Jan. 22, 2004**

(54) **DUAL PANEL-TYPE ORGANIC ELECTROLUMINESCENT DISPLAY DEVICE AND METHOD OF FABRICATING THE SAME**

(30) **Foreign Application Priority Data**

Jul. 18, 2002 (KR)..... 2002-41938

Publication Classification

(51) **Int. Cl.⁷ H01L 21/00**

(52) **U.S. Cl. 438/22**

(75) **Inventors: Jae-Yong Park, Gyeonggi-do (KR); Choong-Keun Yoo, Incheon (KR); Ock-Hee Kim, Gyeonggi-do (KR); Nam-Yang Lee, Gyeonggi-do (KR); Kwan-Soo Kim, Gyeonggi-do (KR)**

(57) **ABSTRACT**

An organic electroluminescent display device includes first and second substrates facing and spaced apart from each other, the first and second substrates having a plurality of sub-pixel regions, a thin film transistor provided at each of the plurality of sub-pixel regions on an inner surface of the first substrate, a first electrode on an inner surface of the second substrate, an organic electroluminescent layer on the first electrode, a second electrode on the organic electroluminescent layer at each of the plurality of sub-pixel regions, and a connection pattern contacting the thin film transistor and the second electrode, wherein a melting temperature of the connection pattern is lower than a melting temperature of the second electrode.

Correspondence Address:
MORGAN LEWIS & BOCKIUS LLP
1111 PENNSYLVANIA AVENUE NW
WASHINGTON, DC 20004 (US)

(73) **Assignee: LG.Philips LCD Co., Ltd.**

(21) **Appl. No.: 10/608,219**

(22) **Filed: Jun. 30, 2003**

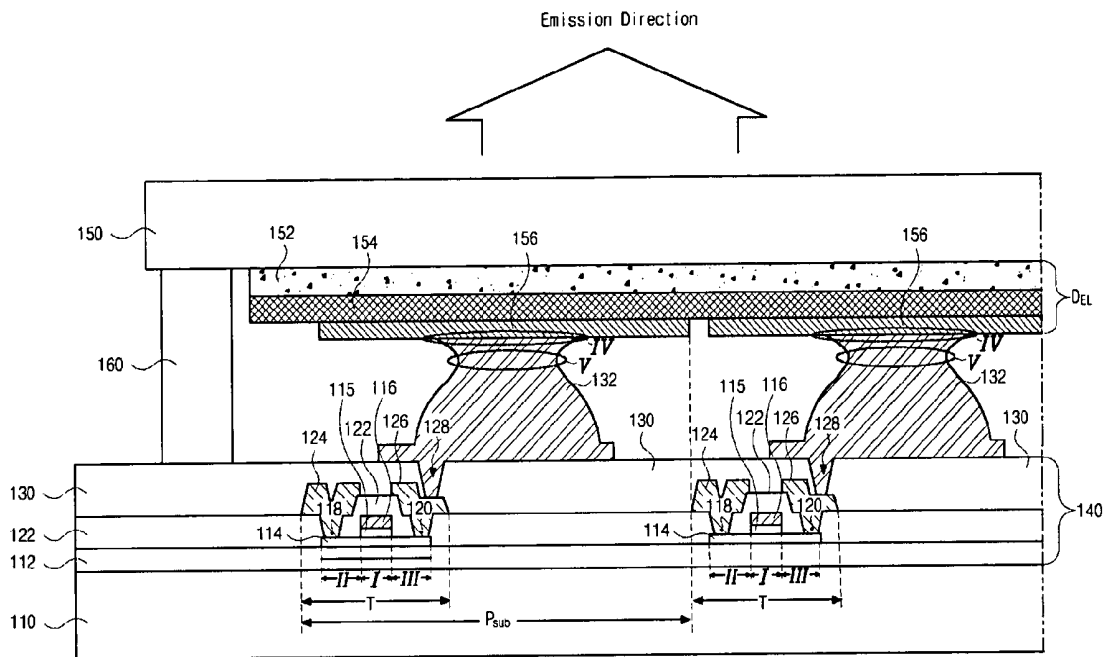


FIG. 1

Related Art

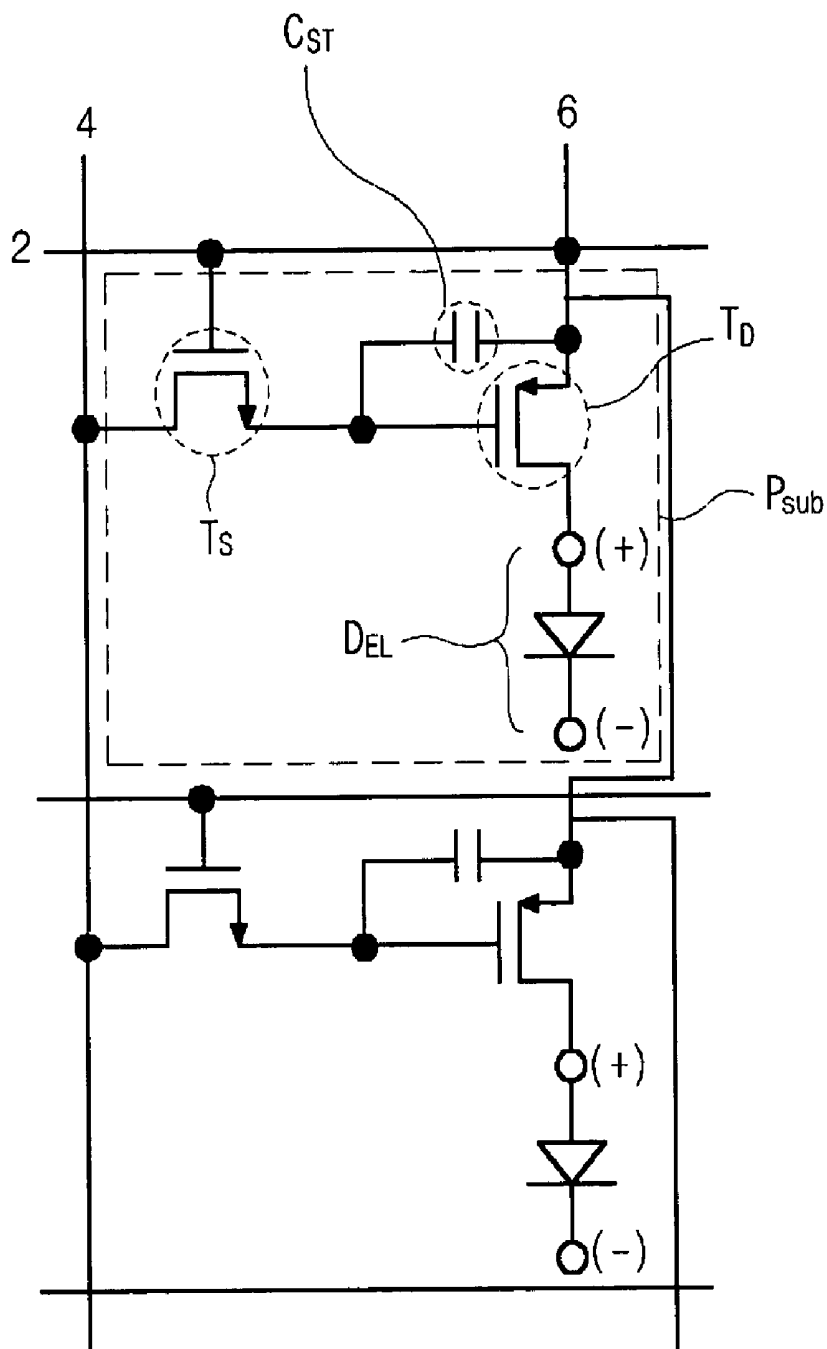


FIG. 2
Related Art

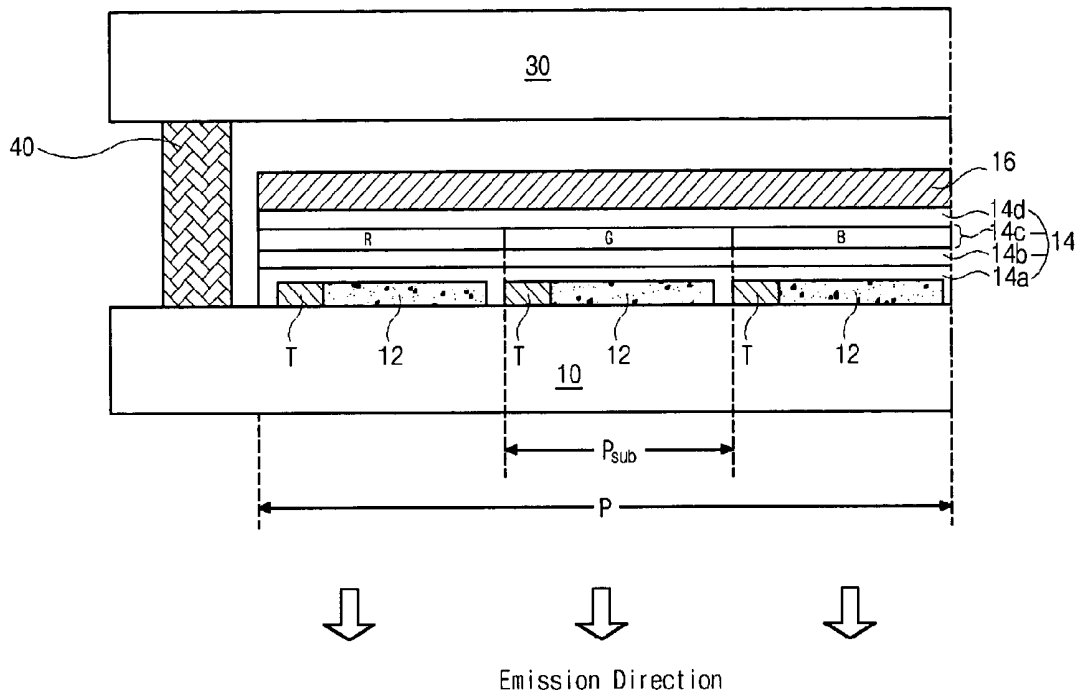


FIG. 3
Related Art

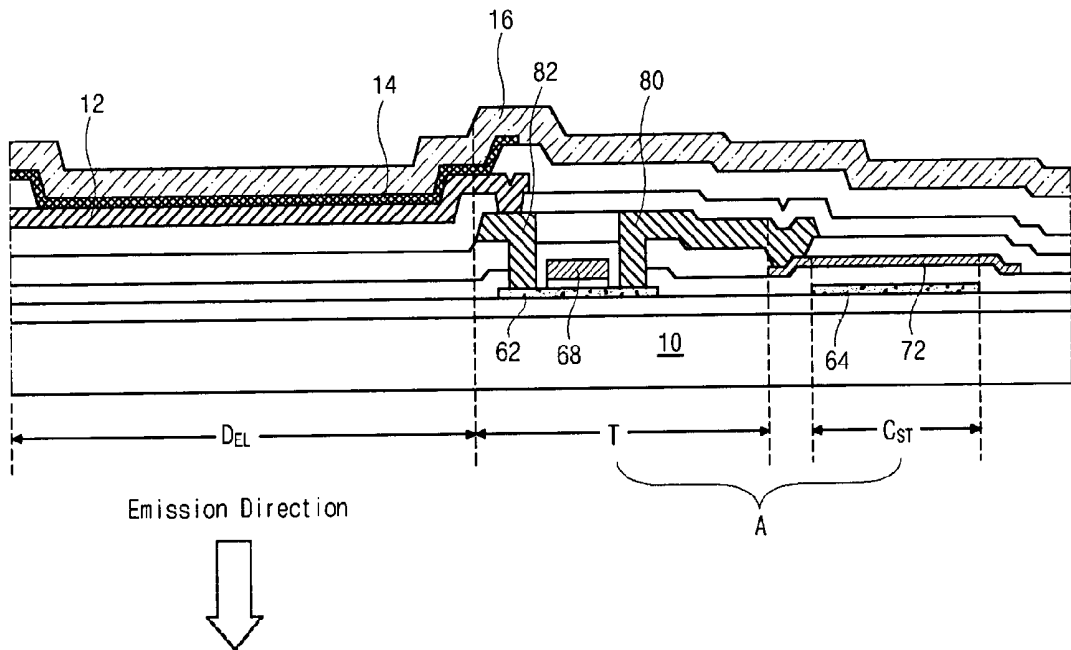


FIG. 4 Related Art

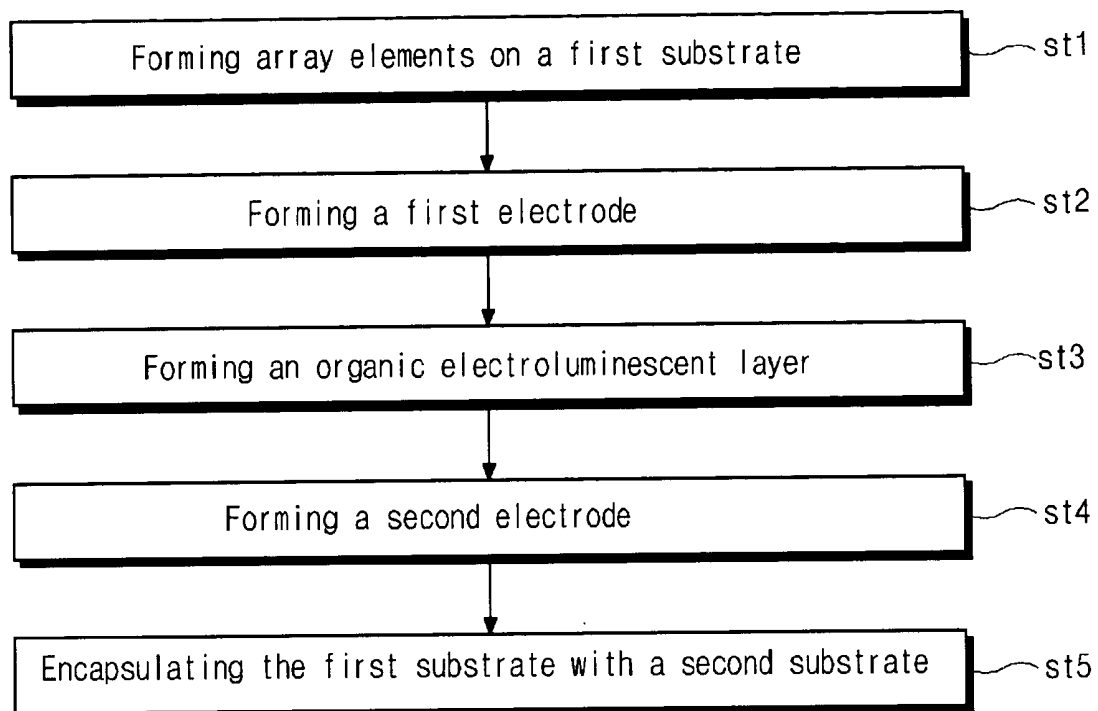


FIG. 5

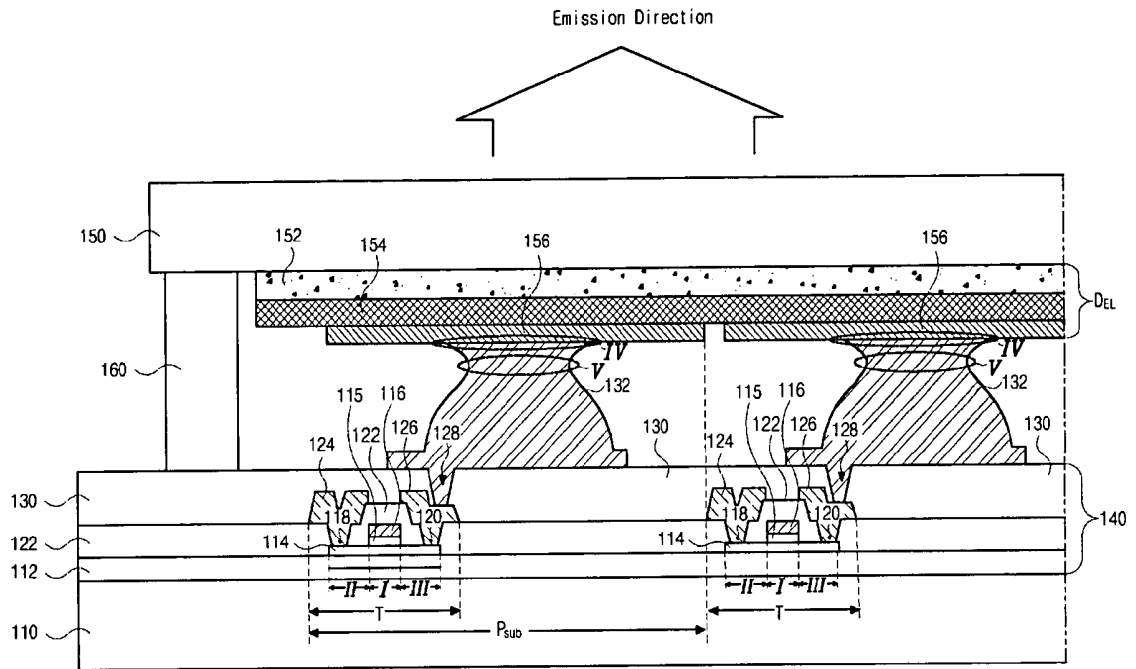


FIG. 6

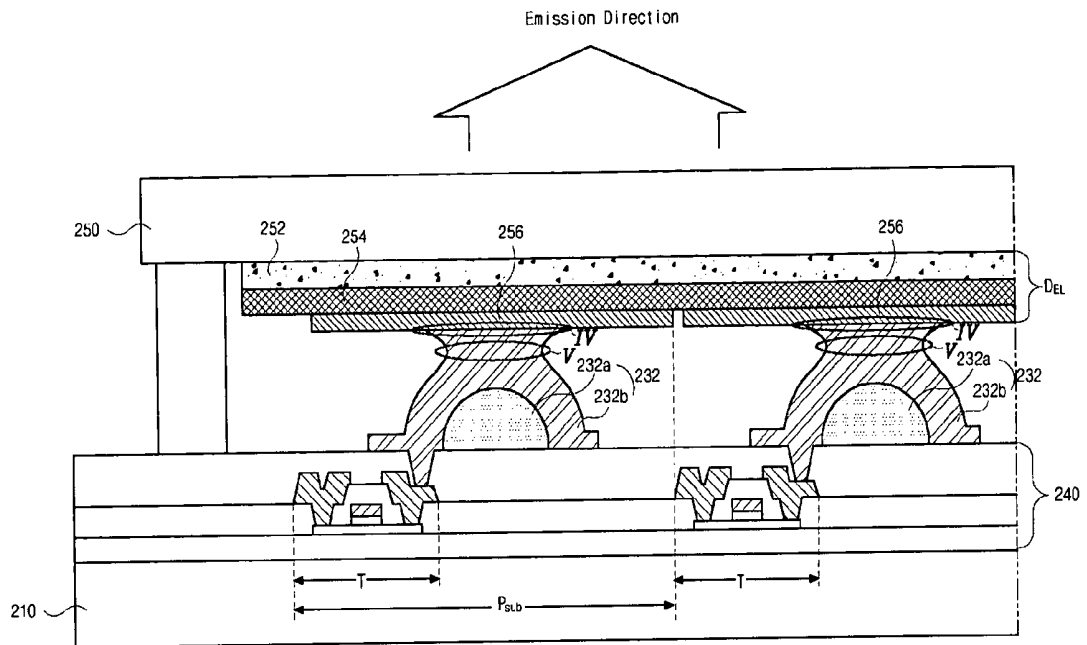


FIG. 7A

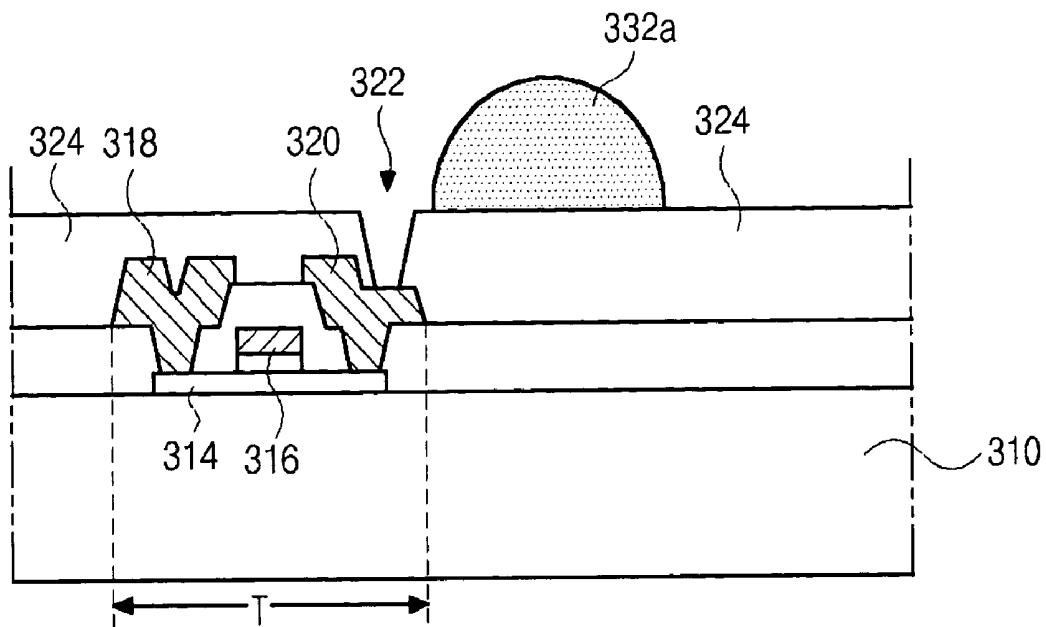


FIG. 7B

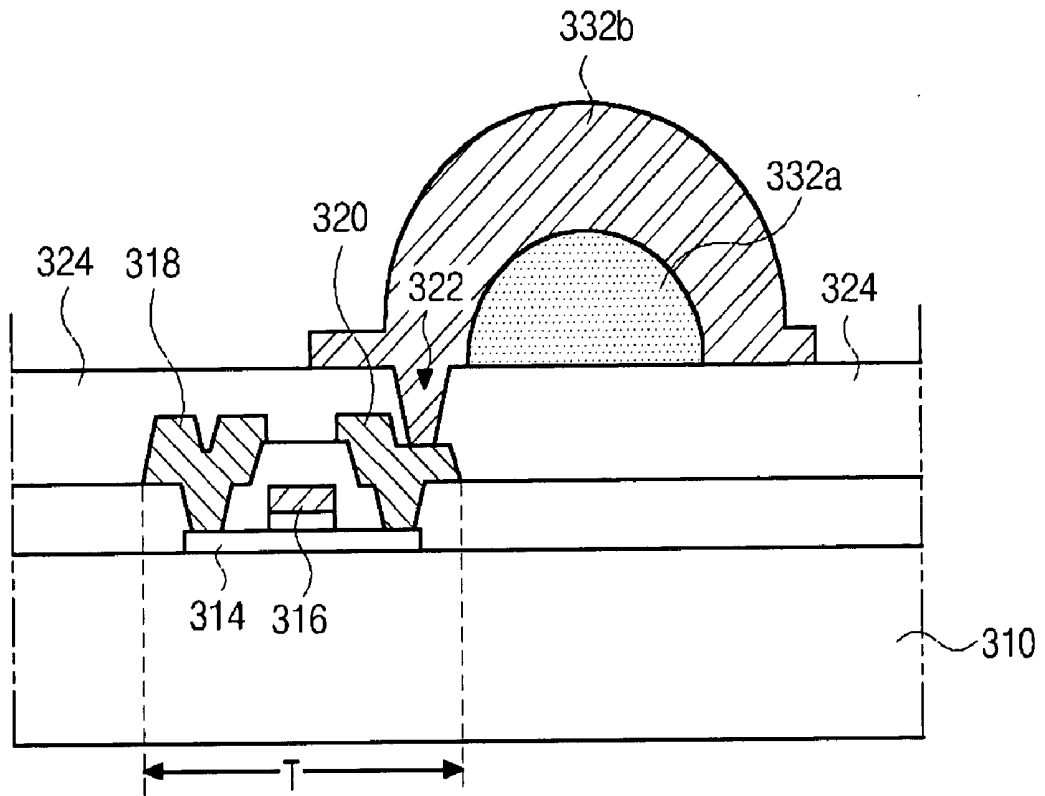
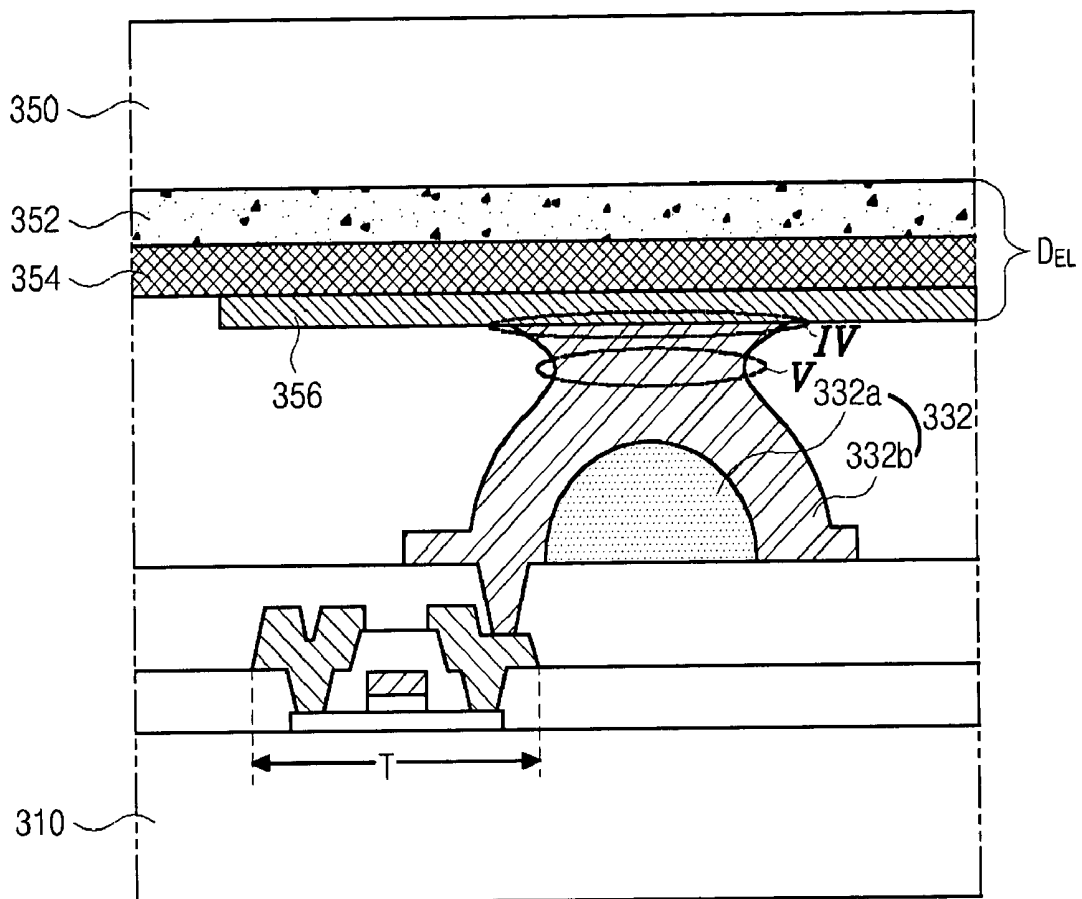


FIG. 7C



**DUAL PANEL-TYPE ORGANIC
ELECTROLUMINESCENT DISPLAY DEVICE AND
METHOD OF FABRICATING THE SAME**

[0001] The present invention claims the benefit of Korean Patent Application No. 2002-41938 filed in Korea on Jul. 18, 2002, which is hereby incorporated by reference.

BACKGROUND OF THE INVENTION

[0002] 1. Field of the Invention

[0003] The present invention relates to an organic electroluminescent display device and a method of fabricating an organic electroluminescent display device, and more particularly, to a dual panel-type organic electroluminescent device and a method of fabricating a dual panel-type organic electroluminescent display device.

[0004] 2. Discussion of the Related Art

[0005] Among various different types of flat panel display (FPD) devices, organic electroluminescent display (OLED) devices have been developed because of their light-emitting properties, wide viewing angles, and good contrast ratios, as compared with the liquid crystal display (LCD) devices. Since a backlight device is not necessary in the OLED devices, the OLED devices can be light weight and thin. In addition, the OLED devices have low power consumption. When driving OLED devices, a low voltage direct current (DC) can be used, whereby rapid response speeds can be obtained. Since the OLED devices are solid state devices, unlike the LCD devices, they are sufficiently strong to withstand external impact and have greater operational temperature ranges. In addition, the OLED devices can be manufactured at low costs. For example, since only deposition and encapsulation apparatus are necessary for manufacturing the OLED devices, manufacturing processes of the OLED devices are simple in contrast to the LCD devices and in contrast to plasma display panel (PDP) devices.

[0006] During an operation method for the OLED devices, a passive matrix operating method that does not use additional thin film transistors (TFTs) is used. However, since passive matrix-type OLED devices have limited resolution, high power consumption, and reduced operational lifetime, active matrix-type OLED devices have been developed as next generation display devices that require high resolution and large display area.

[0007] In passive matrix-type OLED devices, scanning lines and signal lines are arranged to perpendicularly cross each in a matrix configuration, whereas in the active matrix-type OLED devices, a TFT is disposed at each pixel region to function as a switch to turn a first electrode connected to the TFT ON and OFF, and a second electrode is provided to face the first electrode.

[0008] In the passive matrix-type OLED devices, a scanning voltage is sequentially supplied to the scanning lines to operate each pixel. Accordingly, in order to obtain a required average brightness, an instantaneous brightness of each pixel during the selection period should reach a value resulting from multiplying the average brightness by the total number of scanning lines. Thus, since supplied voltage and current increase as the total number of the scanning lines increases, the passive matrix-type OLED devices are not

adequate to display high resolution images over a large display area due to the high power consumption.

[0009] However, in active matrix-type OLED devices, a voltage supplied to the pixel is stored in a storage capacitor, thereby maintaining the voltage and driving the device until a voltage of next frame is supplied regardless of the total number of the scanning lines. Accordingly, an equivalent brightness is obtained using low supplied current, wherein the active matrix-type OLED device operates having low power consumption and high image resolution over a large display.

[0010] FIG. 1 is an equivalent circuit diagram of a basic pixel structure of an active matrix-type organic electroluminescent display device according to the related art. In FIG. 1, a scanning line 2 is arranged along a first direction, and a signal line 4 and a power line 6 are arranged along a second direction perpendicular to the first direction, thereby defining a sub-pixel region "P_{sub}," wherein the signal line 4 and the power line 6 are spaced apart from each other. In addition, a switching TFT "T_S," which is commonly referred to as an addressing element, is connected to the scanning line 2 and the signal line 4, and a storage capacitor "C_{ST}" is connected to the switching TFT "T_S" and the power line 6. A driving TFT "T_D," commonly referred to as a current source element, is connected to the storage capacitor "C_{ST}" and the power line 6, and an organic electroluminescent (EL) diode "D_{EL}" is connected to the driving TFT "T_D."

[0011] The organic EL diode "D_{EL}" has an organic EL layer between an anode and a cathode. When a forward current is supplied to the organic EL diode "D_{EL}," an electron and hole are recombined to generate an electron-hole pair through a P-N (positive-negative) junction between the anode, which provides the hole, and the cathode, which provides the electron. Since the electron-hole pair has an energy lower than an energy of the separated electron and hole, an energy difference is created between the recombination and the separated electron-hole pair, whereby light is emitted due to the energy difference.

[0012] Two different types of organic EL devices exist according to a direction of light emitted from the organic EL diode: passive matrix-type and active matrix-type.

[0013] FIG. 2 is a schematic cross sectional view of a bottom emission-type organic electroluminescent display device according to the related art, wherein one pixel region includes red, green, and blue sub-pixel regions. In FIG. 2, first and second substrates 10 and 30 face and are spaced apart from each other, wherein a peripheral portion of the first and second substrates 10 and 30 are sealed together by a seal pattern 40. A thin film transistor (TFT) "T" is formed at each sub-pixel region "P_{sub}" on an inner surface of the first substrate 10, and a first electrode 12 is connected to the TFT "T." In addition, an organic electroluminescent layer 14 including luminescent materials of red, green, and blue is formed on the TFT "T" and the first electrode 12, and a second electrode 16 is formed on the organic electroluminescent layer 14. Accordingly, the first and second electrodes 12 and 16 supply an electric field to the organic electroluminescent layer 14. Although not shown, an adhesive and a moisture absorbent are formed on an inner surface of the second substrate 30 to shield the substrates from external moisture.

[0014] In the bottom emission-type OLED device, for example, the first electrode 12 functions as an anode and is

made of a transparent conductive material, and the second electrode **16** functions as a cathode and is made of a metallic material of low work function. In addition, the organic electroluminescent layer **14** is composed of a hole injection layer **14a**, a hole transporting layer **14b**, an emission layer **14c**, and an electron transporting layer **14d** over the first electrode **12**. The emission layer **14c** has a structure where emissive materials of red, green, and blue are alternately disposed at each sub-pixel region "P_{sub}."

[0015] FIG. 3 is a schematic cross sectional view of a sub-pixel region of a bottom emission-type organic electroluminescent display device according to the related art. In FIG. 3, a thin film transistor (TFT) "T" having a semiconductor layer **62**, a gate electrode **68**, and source and drain electrodes **80** and **82** is formed on a substrate **10**. The source and drain electrodes **80** and **82** are connected to a power electrode **72** that extends from a power line (not shown) and an organic electroluminescent (EL) diode "D_{EL}" respectively. In addition, a storage capacitor "C_{ST}" includes the power electrode **72** and a capacitor electrode **64** facing each other with an insulating layer disposed between the power electrode **72** and the capacitor electrode **64**, wherein the capacitor electrode **64** is made of the same material as the semiconductor layer **62**.

[0016] In FIG. 3, the TFT "T" and the storage capacitor "C_{ST}" are collectively referred to as array elements "A," whereas the organic EL diode "D_{EL}" includes first and second electrodes **12** and **16** that face each other with an organic EL layer **14** disposed therebetween. The source electrode **80** of the TFT "T" is connected to the power electrode **72** of the storage capacitor "C_{ST}," and the drain electrode **82** of the TFT "T" is connected to the first electrode **12** of the organic EL diode "D_{EL}."

[0017] FIG. 4 is a flow chart showing a fabricating process of an organic electroluminescent display device according to the related art. In FIG. 4, at step st1, array elements are formed on a first substrate, wherein the array elements include a scanning line, a signal line, a power line, a switching TFT, and a driving TFT. In addition, the signal line and the power line cross the scanning line and are spaced apart from each other, wherein the switching TFT is disposed at the crossing of the scanning and signal lines and the driving TFT is disposed at the crossing of the scanning and the power lines.

[0018] At step st2, a first electrode of an organic EL diode is formed over the array elements, wherein the first electrode is connected to the driving TFT of each sub-pixel region.

[0019] At step st3, an emission layer of the organic EL diode is formed on the first electrode. If the first electrode is designed to function as an anode, the organic EL layer can be composed of a hole injection layer, a hole transporting layer, an emission layer, and an electron transporting layer.

[0020] At step st4, a second electrode of the EL diode is formed on the organic EL layer. The second electrode is formed over an entire surface of the first substrate to function as a common electrode.

[0021] At step st5, the first substrate is encapsulated with a second substrate, wherein the second substrate protects the first substrate from external impact and prevents damage of the organic EL layer due to ambient air. In addition, a moisture absorbent may be included in an inner surface of the second substrate.

[0022] Accordingly, an organic EL device is fabricated through encapsulating the first substrate including the array elements and the organic EL diode with the second substrate. Since the production yield of the array elements multiplied by the production yield of the organic EL diode determines the production yield of the organic EL device, the production yield of the whole process is greatly restricted by the process for forming the organic EL diode. For example, even when the array elements are properly fabricated, the organic EL diode may not be properly fabricated, and thus, the production yield is adversely effected.

[0023] The bottom emission-type organic EL device has high encapsulation stability and high process flexibility. However, since the aperture ratio is restricted, it is difficult to incorporate the bottom emission-type organic EL device into a device having high image resolution. On the other hand, since the top emission-type organic EL device is easily designed and has high aperture ratio, the top emission-type organic EL device has some advantages, such as long operational lifetime. However, since the cathode is generally formed on the organic EL layer in the organic EL device of the top emission-type EL device, transmittance is reduced due to limitation of material selection such that optical efficiency is reduced. In addition, when a thin film protection layer is used to minimize the reduction of the transmittance, infiltration of ambient air is increased.

SUMMARY OF THE INVENTION

[0024] Accordingly, the present invention is directed to an organic electroluminescent display device and a method of fabricating an organic electroluminescent display device that substantially obviate one or more of the problems due to limitations and disadvantages of the related art.

[0025] An object of the present invention is to provide a dual panel-type organic electroluminescent display device that has improved production yield, high image resolution, and high aperture ratio.

[0026] Another object of the present invention is to provide a method of fabricating a dual panel-type organic electroluminescent display device that has improved production yield, high image resolution, and high aperture ratio.

[0027] Another object of the present invention is to provide an organic electroluminescent display device that has improved connection properties between array elements and organic electroluminescent diodes.

[0028] Another object of the present invention is to provide a method of fabricating an organic electroluminescent display device that has improved connection properties between array elements and organic electroluminescent diodes.

[0029] Additional features and advantages of the invention will be set forth in the description which follows, and in part will be apparent from the description, or may be learned by practice of the invention. The objectives and other advantages of the invention will be realized and attained by the structure particularly pointed out in the written description and claims hereof as well as the appended drawings.

[0030] To achieve these and other advantages and in accordance with the purpose of the present invention, as

embodied and broadly described, an organic electroluminescent display device includes first and second substrates facing and spaced apart from each other, the first and second substrates having a plurality of sub-pixel regions, a thin film transistor provided at each of the plurality of sub-pixel regions on an inner surface of the first substrate, a first electrode on an inner surface of the second substrate, an organic electroluminescent layer on the first electrode, a second electrode on the organic electroluminescent layer at each of the plurality of sub-pixel regions, and a connection pattern contacting the thin film transistor and the second electrode, wherein a melting temperature of the connection pattern is lower than a melting temperature of the second electrode.

[0031] In another aspect, a method of fabricating an organic electroluminescent display device includes forming a thin film transistor on a first substrate having a plurality of sub-pixel regions, the thin film transistor corresponding to each of the plurality of sub-pixel regions, forming a passivation layer on the thin film transistor, the passivation layer having a contact hole exposing the thin film transistor, forming a connection pattern on the passivation layer, the connection pattern contacting the thin film transistor through the contact hole, forming a first electrode on a second substrate having the plurality of sub-pixel regions, forming an organic electroluminescent layer on the first electrode, forming a second electrode on the organic electroluminescent layer, the second electrode corresponding to each of the plurality of sub-pixel regions, and attaching the first and second substrates such that the connection pattern contacts the second electrode, wherein a melting temperature of the connection pattern is lower than a melting temperature of the second electrode.

[0032] In another aspect, a method of fabricating an organic electroluminescent display device includes forming a thin film transistor on a first substrate having a plurality of sub-pixel regions, forming a passivation layer on the thin film transistor having a contact hole exposing the thin film transistor, forming a connection pattern on the passivation layer to contact the thin film transistor through the contact hole, forming a first electrode on a second substrate having the plurality of sub-pixel regions, forming an organic electroluminescent layer on the first electrode, forming a second electrode on the organic electroluminescent layer, and attaching the first and second substrates such that the connection pattern melts at a first temperature and contacts the second electrode.

[0033] It is to be understood that both the foregoing general description and the following detailed description are exemplary and explanatory and are intended to provide further explanation of the invention as claimed.

BRIEF DESCRIPTION OF THE DRAWINGS

[0034] The accompanying drawings, which are included to provide a further understanding of the invention and are incorporated in and constitute a part of this specification, illustrate embodiments of the invention and together with the description serve to explain the principle of the invention. In the drawings:

[0035] FIG. 1 is an equivalent circuit diagram of a basic pixel structure of an active matrix-type organic electroluminescent display device according to the related art;

[0036] FIG. 2 is a schematic cross sectional view of a bottom emission-type organic electroluminescent display device according to the related art;

[0037] FIG. 3 is a schematic cross sectional view of a sub-pixel region of a bottom emission-type organic electroluminescent display device according to the related art;

[0038] FIG. 4 is a flow chart showing a fabricating process of an organic electroluminescent display device according to the related art;

[0039] FIG. 5 is a schematic cross sectional view of an exemplary organic electroluminescent display device according to the present invention;

[0040] FIG. 6 is a schematic cross sectional view of another exemplary organic electroluminescent display device according to the present invention; and

[0041] FIGS. 7A to 7C are schematic cross sectional views of an exemplary method of fabricating an organic electroluminescent display device according to the present invention.

DETAILED DESCRIPTION OF THE PREFERRED EMBODIMENTS

[0042] Reference will now be made in detail to the preferred embodiments of the present invention, examples of which are illustrated in the accompanying drawings.

[0043] FIG. 5 is a schematic cross sectional view of an exemplary organic electroluminescent display device according to the present invention. In FIG. 5, first and second substrates 110 and 150 may be provided to face and be spaced apart from each other, wherein the first and second substrates 110 and 150 may have a plurality of sub-pixel regions "P_{sub}." In addition, an array element layer 140 including a thin film transistor (TFT) "T" may be formed on an inner surface of the first substrate 110 at each sub-pixel region "P_{sub}." Although not shown, the array element layer 140 may include a gate line, a data line, a power line, and a common line. Furthermore, a connection pattern 132 of a cylindrical shape may be formed on and connected to the TFT "T" of the array elements 140.

[0044] A first electrode 152 and an organic electroluminescent (EL) layer 154 may be sequentially formed on an inner surface of the second substrate 150, and a second electrode 156 may be formed on the organic EL layer 154 at each sub-pixel region "P_{sub}," wherein the second electrode 156 may contact the connection pattern 132. In addition, the first and second substrates 110 and 150 may be attached together using a seal pattern 160 formed along a peripheral portion of the first and second substrates 110 and 150.

[0045] The array element layer 140 may include buffer layer 112 formed on the inner surface of the first substrate 110, a semiconductor layer 114 having a channel region "I," and source and drain regions "II" and "III" formed on the buffer layer 112 at each sub-pixel region "P_{sub}." In addition, a gate insulating layer 115 and a gate electrode 116 may be sequentially formed on the semiconductor layer 114 of the channel region "I," and a first passivation layer 122 having first and second contact holes 118 and 120 may be formed on the gate electrode 116. For example, the first and second contact holes 118 and 120 may expose the source and drain regions "II" and "III," respectively. Then, source and drain

electrodes **124** and **126** may be formed on the first passivation layer **122**, wherein the source electrode **124** may be connected to the source region "II" through the first contact hole **118**, and the drain electrode **126** may be connected to the drain region "III" through the second contact hole **120**.

[0046] Next, a second passivation layer **130** having a third contact hole **128** may be formed on the source and drain electrodes **124** and **126**, wherein the third contact hole **128** may expose the drain electrode **126**. Then, a connection pattern **132** of a cylindrical shape, for example, may be formed on the second passivation layer **130** and may be connected to the drain electrode **126** through the third contact hole **128**. Accordingly, the semiconductor layer **114**, the gate electrode **116**, and the source and drain electrodes **124** and **126** may constitute a thin film transistor (TFT) "T."

[0047] To improve contact property between the connection pattern **132** and the second electrode **156**, the connection pattern **132** may include metallic material(s) having a melting temperature lower than a melting temperature of the other materials for an organic EL device. For example, a melting temperature of the connection pattern **132** may be lower than a melting temperature of the second electrode **156**. Accordingly, when the first and second substrates **110** and **150** are attached together, the first and second substrates **110** and **150** are heated to a temperature range where only the connection pattern **132** selectively melts. Thus, adhesion may be improved between the connection pattern **132** and the second electrode **156**. As a result, the connection pattern **132** may have a larger cross sectional area at a first portion "IV" that contacts the second electrode **156** than at a second portion "V" adjacent to the first portion "IV."

[0048] After an array element and an organic EL diode are formed on respective substrates, the respective substrates are attached together such that a connection pattern connects the array element and the organic EL diode. During the substrate attachment process, the connection pattern may have a melting temperature lower than a melting temperature of the organic EL diode, such that the organic EL diode may not suffer damage and the connection pattern melts. Since the melting connection pattern contacts the second electrode and is diffused along a surface of the second electrode due to surface tension, a cross sectional area of the connection pattern at a first portion that contacts the second electrode may be larger than a cross sectional area of a second portion adjacent to the first portion. Accordingly, adhesion may be improved.

[0049] The connection pattern **132** may include at least one of gallium indium (GaIn) alloy, lead tin (PbSn) alloy, lead tin silver (PbSnAg) alloy, tin indium (SnIn) alloy, tin indium copper (SnInCu) alloy, and tin indium silver (SnInAg) alloy. Although not shown in FIG. 5, a moisture absorbent may be formed at an interior of the seal pattern **160**.

[0050] FIG. 6 is a schematic cross sectional view of another exemplary organic electroluminescent display device according to the present invention. In FIG. 6, first and second substrates **210** and **250** may be provided to face and be spaced apart from each other, wherein the first and second substrates **210** and **250** may have a plurality of sub-pixel regions "P_{sub}." In addition, an array element layer **240** including a thin film transistor (TFT) "T" may be formed on an inner surface of the first substrate **210** at each

sub-pixel region "P_{sub}." Although not shown in FIG. 6, the array element layer **240** may include a gate line, a data line, a power line, and a common line. Then, a first electrode **252** and an organic electroluminescent (EL) layer **254** may be sequentially formed on an inner surface of the second substrate **250**, and a second electrode **256** may be formed on the organic EL layer **254** at each sub-pixel region "P_{sub}." Accordingly, the organic EL device of FIG. 6 may be a top emission-type OLED device, wherein light may be emitted toward the first electrode **252**.

[0051] In FIG. 6, a second pattern **232** may include a first pattern **232a** of a hemispherical shape and a second pattern **232b** covering the first pattern **232a**, wherein a flat surface of the first pattern **232a** may face the array element layer **240**. In addition, the second pattern **232b** having a shape corresponding to the first pattern **232a** may contact the TFT "T" and the second electrode **256**. For example, the first pattern **232a** may be formed of a photoresist through photolithographic processes including exposure and development steps. Moreover, the second pattern **232b** may include metallic material(s) having a melting temperature lower than melting temperatures of the other materials for forming an organic EL device. For example, a melting temperature of the second pattern **232b** may be lower than a melting temperature of the second electrode **256**. The second pattern **232b** may include at least one of gallium indium (GaIn) alloy, lead tin (PbSn) alloy, lead tin silver (PbSnAg) alloy, tin indium (SnIn) alloy, tin indium copper (SnInCu) alloy, and tin indium silver (SnInAg) alloy.

[0052] In FIG. 6, since the connection pattern **232** may have a double layer structure, it may be easy to adjust a thickness (height) of the connection pattern **232**. Moreover, the second pattern **232b** may have a larger cross sectional area at a first portion "IV" that contacts the second electrode **256** than at a second portion "V" adjacent to the first portion "IV," as shown in FIG. 5.

[0053] FIGS. 7A to 7C are schematic cross sectional views of an exemplary method of fabricating an organic electroluminescent display device according to the present invention. In FIG. 7A, a thin film transistor (TFT) "T" including a semiconductor layer **314**, a gate electrode **316**, and source and drain electrodes **318** and **320** may be formed on a first substrate **310**, and a passivation layer **324** having a drain contact hole **322** may be formed on the TFT "T," wherein the drain contact hole **322** may expose the drain electrode **320**. Next, a first pattern **332a** of a hemispherical shape may be formed on the passivation layer **324**, wherein the first pattern **332a** may include insulating material(s), for example, a photoresist. Accordingly, the photoresist may be patterned to have a hemispherical shape such that a flat surface of the first pattern faces the passivation layer **324**. Moreover, the first pattern **332a** may be disposed adjacent to the drain contact hole **322** without filling the drain contact hole **322**.

[0054] In FIG. 7B, a second pattern **332b** may be formed on the first pattern **332a** and may be connected to the drain electrode **320** through the drain contact hole **322**. In addition, the second pattern **332b** may have a structure corresponding to the first pattern **332a** and may include metallic material(s) that have a lower melting temperature than melting temperatures of other materials for forming the organic electroluminescent (EL) device, i.e., a second elec-

trode of a second substrate. The first and second patterns **332a** and **332b** may constitute a connection pattern **332**, wherein the second pattern **332b** may include at least one of gallium indium (GaIn) alloy, lead tin (PbSn) alloy, lead tin silver (PbSnAg) alloy, tin indium (SnIn) alloy, tin indium copper (SnInCu) alloy, and tin indium silver (SnInAg) alloy.

[0055] In FIG. 7C, a first electrode **352** may be formed on a second substrate **350**, an organic EL layer **354** may be formed on the first electrode **352**, and a second electrode **356** may be formed on the organic EL layer **354**. The first and second electrodes **352** and **356**, and the organic EL layer **354** interposed therebetween may constitute an organic EL diode "D_{EL}." Although not shown in FIG. 7C, a seal pattern may be formed along a peripheral portion on one, or both of the first and second substrates **310** and **350**. After aligning the second substrate **350** with the first substrate **310** such that the second electrode **356** faces the connection pattern **332**, the first and second substrates **310** and **350** may be attached together using the seal pattern (not shown). During the substrate attachment process, the second electrode **356** may contact the connection pattern **332**.

[0056] When the second electrode **356** contacts the connection pattern **332**, the first and second substrates **310** and **350** may be heated to improve contact properties between the second electrode **356** and the connection pattern **332**. For example, the second electrode **356** and the connection pattern **332** may effectively contact each other by a welding method using pressure under a vacuum, whereby the first substrate **310** may be heated to within a temperature range where the metallic material(s) of the second pattern **332b** melts. For example, the temperature range may be within about 100° C. to about 160° C. Since the second electrode **356** may contact the connection pattern **332** using the welding method, the second pattern **332b** of the connection pattern **332** may have a larger cross sectional area at a first portion "IV" that contacts the second electrode **356** than at a second portion "V" adjacent to the first portion "IV." Accordingly, the contact properties between the second electrode **356** and the connection pattern **332** may be improved.

[0057] An organic electroluminescent device of the present invention has some advantages. First, production yield and production management efficiency are improved, and operational lifetime of an organic EL device is lengthened. Second, since an organic EL device is a top emission-type OLED device, a thin film transistor can be easily designed, and high aperture ratio and high image resolution may be obtained. Third, since an organic EL device has an encapsulation structure, an organic EL device may be protected from infiltration of ambient air. Fourth, since contact properties between an organic EL diode and a thin film transistor are improved, reliability is improved.

[0058] It will be apparent to those skilled in the art that various modifications and variations can be made in the organic electroluminescent display device and method of fabricating method an organic electroluminescent display device of the present invention without departing from the spirit or scope of the invention. Thus, it is intended that the present invention cover the modifications and variations of this invention provided they come within the scope of the appended claims and their equivalents.

What is claimed is:

1. An organic electroluminescent display device, comprising:

first and second substrates facing and spaced apart from each other, the first and second substrates having a plurality of sub-pixel regions;

a thin film transistor provided at each of the plurality of sub-pixel regions on an inner surface of the first substrate;

a first electrode on an inner surface of the second substrate;

an organic electroluminescent layer on the first electrode;

a second electrode on the organic electroluminescent layer at each of the plurality of sub-pixel regions; and

a connection pattern contacting the thin film transistor and the second electrode,

wherein a melting temperature of the connection pattern is lower than a melting temperature of the second electrode.

2. The device according to claim 1, wherein the connection pattern has a first portion contacting the second electrode and a second portion adjacent to the first portion such that a cross sectional area of the first portion is larger than a cross sectional area of the second portion.

3. The device according to claim 1, wherein the first electrode includes transparent material.

4. The device according to claim 1, further comprising an island-shaped buffer pattern between the connection pattern and the first substrate.

5. The device according to claim 4, wherein the buffer pattern has a hemispheric shape.

6. The device according to claim 4, wherein the buffer pattern includes one of photoresist, photo-acryl, and polyimide materials.

7. The device according to claim 1, wherein the connection electrode includes at least one of gallium indium (GaIn) alloy, lead tin (PbSn) alloy, lead tin silver (PbSnAg) alloy, tin indium (SnIn) alloy, tin indium copper (SnInCu) alloy, and tin indium silver (SnInAg) alloy.

8. The device according to claim 1, wherein the thin film transistor includes a semiconductor layer, a gate electrode, and source and drain electrodes such that the connection pattern contacts the drain electrode.

9. A method of fabricating an organic electroluminescent display device, comprising:

forming a thin film transistor on a first substrate having a plurality of sub-pixel regions, the thin film transistor corresponding to each of the plurality of sub-pixel regions;

forming a passivation layer on the thin film transistor, the passivation layer having a contact hole exposing the thin film transistor;

forming a connection pattern on the passivation layer, the connection pattern contacting the thin film transistor through the contact hole;

forming a first electrode on a second substrate having the plurality of sub-pixel regions;

forming an organic electroluminescent layer on the first electrode;

forming a second electrode on the organic electroluminescent layer, the second electrode corresponding to each of the plurality of sub-pixel regions; and

attaching the first and second substrates such that the connection pattern contacts the second electrode,

wherein a melting temperature of the connection pattern is lower than a melting temperature of the second electrode.

10. The method according to claim 9, further comprising forming a seal pattern between the first and second substrates.

11. The method according to claim 9, wherein the connection pattern contacts the second electrode by welding.

12. The method according to claim 11, wherein the welding is performed under vacuum.

13. The method according to claim 11, wherein the first substrate is heated to a temperature within about 100° C. to about 160° C. during the welding.

14. The method according to claim 11, wherein the first and second substrates are pressurized during the welding.

15. The method according to claim 11, wherein the connection pattern has a first portion contacting the second electrode and a second portion adjacent to the first portion such that a cross sectional area of the first portion is larger than a cross sectional area of the second portion.

16. The method according to claim 9, further comprising forming an island-shaped buffer pattern between the passivation layer and the connection pattern.

17. The method according to claim 16, wherein the buffer pattern has a hemispheric shape.

18. The method according to claim 16, wherein the buffer pattern includes one of photoresist, photo-acryl, and polyimide materials.

19. The method according to claim 9, wherein the connection electrode includes at least one of gallium indium (GaIn) alloy, lead tin (PbSn) alloy, lead tin silver (PbSnAg) alloy, tin indium (SnIn) alloy, tin indium copper (SnInCu) alloy, and tin indium silver (SnInAg) alloy.

20. The method according to claim 9, wherein the connection pattern contacts the second electrode by surface tension and diffusion.

21. A method of fabricating an organic electroluminescent display device, comprising:

forming a thin film transistor on a first substrate having a plurality of sub-pixel regions;

forming a passivation layer on the thin film transistor having a contact hole exposing the thin film transistor;

forming a connection pattern on the passivation layer to contact the thin film transistor through the contact hole;

forming a first electrode on a second substrate having the plurality of sub-pixel regions;

forming an organic electroluminescent layer on the first electrode;

forming a second electrode on the organic electroluminescent layer; and

attaching the first and second substrates such that the connection pattern melts at a first temperature and contacts the second electrode.

22. The method according to claim 21, further comprising forming a seal pattern between the first and second substrates.

23. The method according to claim 21, wherein the connection pattern contacts the second electrode by welding.

24. The method according to claim 23, wherein the welding is performed under vacuum.

25. The method according to claim 23, wherein the first substrate is heated to a temperature within about 100° C. to about 160° C. during the welding.

26. The method according to claim 23, wherein the first and second substrates are pressurized during the welding.

27. The method according to claim 23, wherein the connection pattern has a first portion contacting the second electrode and a second portion adjacent to the first portion such that a cross sectional area of the first portion is larger than a cross sectional area of the second portion.

28. The method according to claim 21, further comprising forming an island-shaped buffer pattern between the passivation layer and the connection pattern.

29. The method according to claim 28, wherein the buffer pattern has a hemispheric shape.

30. The method according to claim 28, wherein the buffer pattern includes one of photoresist, photo-acryl, and polyimide materials.

31. The method according to claim 21, wherein the connection electrode includes at least one of gallium indium (GaIn) alloy, lead tin (PbSn) alloy, lead tin silver (PbSnAg) alloy, tin indium (SnIn) alloy, tin indium copper (SnInCu) alloy, and tin indium silver (SnInAg) alloy.

32. The method according to claim 21, wherein the connection pattern contacts the second electrode by surface tension and diffusion.

* * * * *

专利名称(译)	双面板型有机电致发光显示装置及其制造方法		
公开(公告)号	US20040014251A1	公开(公告)日	2004-01-22
申请号	US10/608219	申请日	2003-06-30
[标]申请(专利权)人(译)	乐金显示有限公司		
申请(专利权)人(译)	LG.PHILIPS LCD CO. , LTD.		
当前申请(专利权)人(译)	LG DISPLAY CO. , LTD.		
[标]发明人	PARK JAE YONG YOO CHOONG KEUN KIM OCK HEE LEE NAM YANG KIM KWAN SOO		
发明人	PARK, JAE-YONG YOO, CHOONG-KEUN KIM, OCK-HEE LEE, NAM-YANG KIM, KWAN-SOO		
IPC分类号	H05B33/00 H01J1/62 H01J63/04 H01L21/00 H01L27/32 H01L29/04 H01L29/08 H01L29/24 H01L31/036 H01L31/0376 H01L31/20 H01L33/00 H01L35/24 H01L51/00 H01L51/40 H01L51/52 H05B33/10 H05B33/14		
CPC分类号	H01L27/3246 H01L27/3253 H01L2251/5315 H01L51/0024 H01L51/5206 H01L51/0021		
优先权	1020020041938 2002-07-18 KR		
其他公开文献	US6909110		
外部链接	Espacenet USPTO		

摘要(译)

一种有机电致发光显示装置，包括彼此面对且间隔开的第一基板和第二基板，第一基板和第二基板具有多个子像素区域，薄膜晶体管设置在内部的多个子像素区域中的每一个上所述第一基板的表面，所述第一基板的内表面上的第一电极，所述第一电极上的有机电致发光层，所述多个子像素区域中的每一个上的所述有机电致发光层上的第二电极，以及连接图案接触薄膜晶体管和第二电极，其中连接图案的熔化温度低于第二电极的熔化温度。

